

globalstudio



CSEPEL SC - Budapest, Hungary

client: **INDOTEK**



main **sport fields** in center of Budapest

布达佩斯市中心的主要体育场所



location of the project site

规划区域的地点



impression of the existing site

该地点现状



intro The sport settlement of Csepel SC in the XXIst district of Budapest is one of the significant sport centers of the capital. Due to the changing economical, social, and urban circumstances of the area over the past few years this important function has been disabled. But the foundation operating the settlement appreciates its position in the area, its history leading back to 1912 and the purpose of its function, so has worked closely together with the municipality to revive a strategy towards a solution.

介绍 切佩尔体育俱乐部是首都主要体育场所之一。它位于布达佩斯二十一区。近些年来，随着经济、社会和城市规划的改变，该俱乐部的运作日渐艰难。然而鉴于其优越的地理位置，追溯到1912年的悠久历史及其存在的意义，在市政府密切配合下，经营俱乐部的基金会寻求解决方案



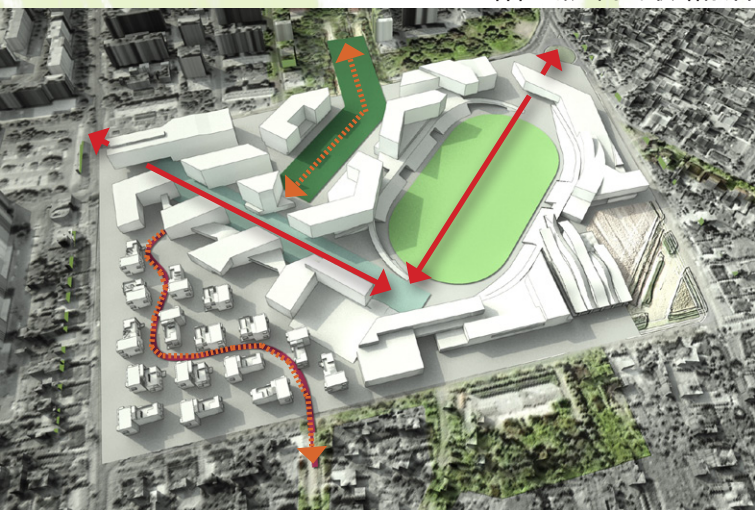
existing project site
proposed plan

既存规划区域
方案



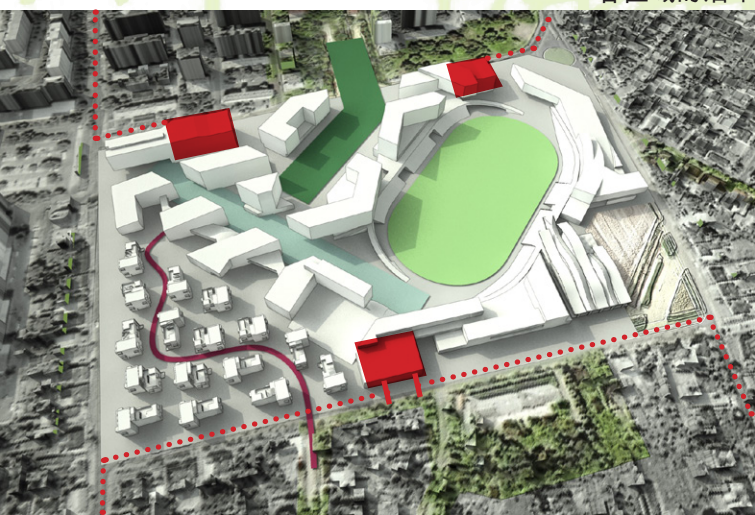
connections trough the different CHARACTER areas

各区域之间的联结融合



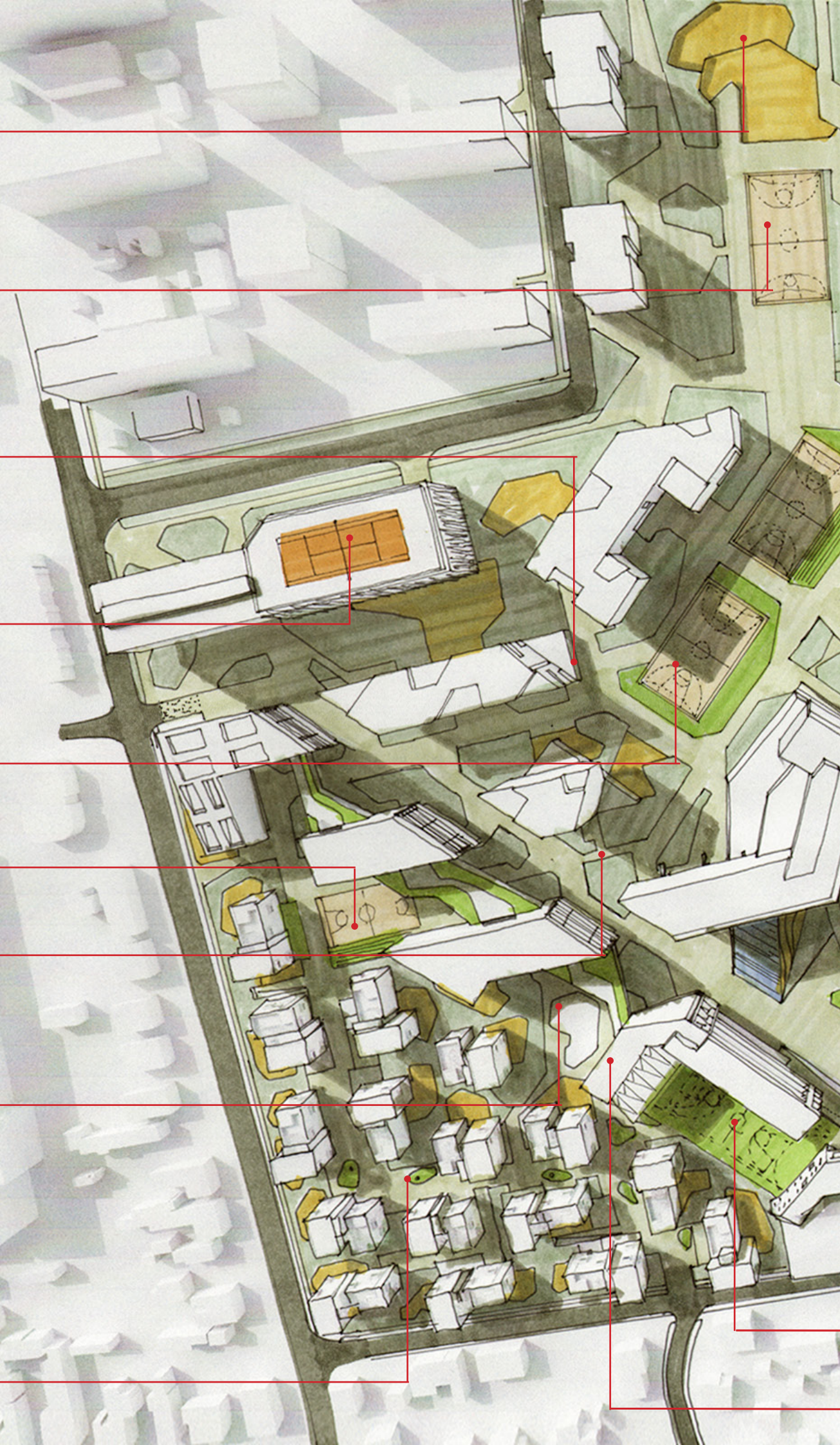
parking for the different CHARACTER areas

各区域的泊车



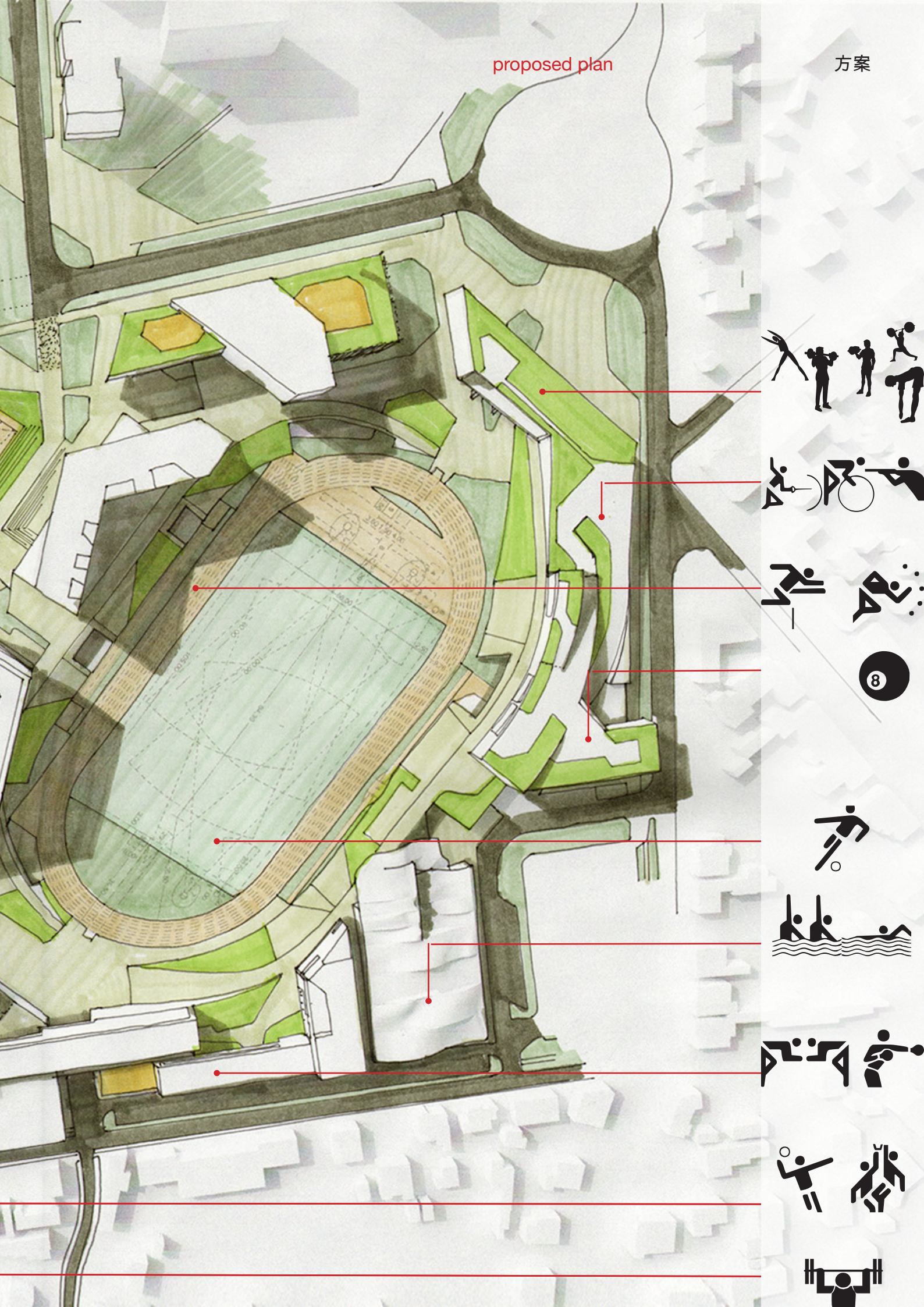
exposition The solution was offered by today's mixed urban spaces interlocking the traditional use of the space. The sport – as communal activity – can be inserted as a missing link among the functions of the modern city-center. The co-existence or mixture of professional and public sports, building up the sport-life together and interacting with each other, could facilitate its long-term activity in the area. The „sport in the city – city in the sport” concept comprehends the new use of the sporting area and the exquisite preservation of its significance within the boundaries of a new city-center. This new center – like a missing piece of a puzzle – should be suitable in every level of the existing, surrounding, and different urban textures: the four zones created on the site, give a whole new meaning to the so far divided cityscape, so that on their areas the commercial, supplier, institutional and sport functions are mixed in the right scale, according to their built character.

详细陈述 解决方案是由现有的城市场所与传统的开发方式结合起来的。社区活动的运动可以为现代城市中心提供新的功能。职业体育和大众体育相互联系，其共存和互融能够促进地区活动的长期活跃。“城市中的运动 – 运动中的城市”，这一概念，在新的城市中心框架中，意味着体育场所新用法以及其一贯重要性。这全新城市中心，像拼图中的一部分，将在各方面，符合周围的现有城市架构。开发地区，依其特性合理分配的区域，由商贸，服务，机构和体育的部分组成。这样创作的四个区域为目前分开的城市带来意义。



proposed plan

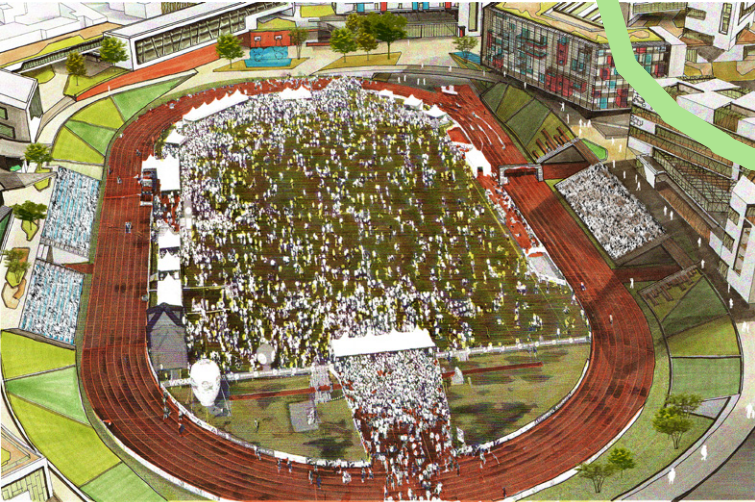
方案





character impression

各区域的蓝图



character impression

各区域的蓝图



character impression

各区域的蓝图



explanation While in Europe, the recession resulted in the cut for support of welfare services like sporting, in Hungary this is an existing problem since the transformation. So such a development can only be successful if, finding the right scale, it can be mixed with establishments attracting investors. The project makes it possible to finance community and sport functions on 60% of its 10 ha area, which means 60.000 m². A symbiosis such as this can serve as a model for the realization of a long-term sustainable development.

解释 经济危机的爆发造成欧洲国家的体育等社会福利补助被削减。在匈牙利，这个问题从其政体转制之时便已存在。因此该项目的开发，只有与拥有合适面积占有率及吸引投资者的设施相结合，才能取得成功。这样，总面积10公顷的该项目，为其中的60%，即60,000平方米的社区及体育活动提供足够资金。这种融合可以成为长期可持续发展的模式。



character impression

各区域的蓝图



character impression

各区域的蓝图



character impression

各区域的蓝图



scale Besides the local urban and cityscape harmony, the scale of the project requires the consideration of its extended influence Budapest. The development also has an effect on the metropolitan level, as it raises the claim of the modification or updating of the regulations layered in distinct levels of authority, meanwhile generating a complex co-operation towards the gratification of the contemporary and dynamically changing urban requirements.

规模 该项目不仅需要配合本地区和城市风光，由于其规模的原因，还要考虑到深层次的融合问题。该地区的开发对首都来讲也很重要，也提出既相互关联又不同层次的监管的改造和现代化要求，号召各阶层的配合来跟上现代城市日新月异变化的脚步。

globalstudio

www.glocalstudio.com
www.archiplan.hu

client:
Indotek Share Co.
rif. 01-10-043632

52 Kerepesi street
H-1148 Budapest - Hungary

indotek@indotek.hu
+36 (1) 688 1700
www.indotek.hu

Budapest

Archiplan Architect Office Ltd.
rif. 01-09-723177

Rhizomestudio
rif. 01-06-759004

Orlay u. 9
H-1114 Budapest - Hungary

office@archiplan.hu
budapest@glocalstudio.com
+36 (1) 217 0027

Caracas

Kunckel Arquitectos Asociados C.A.
rif. j-30638689-0

Inteplanconsult S.A.
rif. j-00183027-8

Av. Río de Janeiro, Res. Lorenal,
Torre B, Piso 1, Chuao - Venezuela

caracas@glocalstudio.com
+58 (212) 991 9113
+58 (212) 991 8186